



BERING 72



STELL EXPEDITION YACHTS





BERING
YACHTS

GENERAL DESCRIPTION

Bering 72 presents an advanced development of a very successful Bering 65 model, of which three hulls were built. While creating Bering 72, the Bering Yachts' in-house design team has collected feedback from the owners and captains of the 65 model after the boats navigated more than 100,000 miles in different climate and sea conditions.

Bering 72 has retained distinctive trawler's lines of her predecessor, but this is a completely new boat: larger, better equipped, with more supplies, and very well inhabited. Bering 72 is a true modern classic of the steel-hulled explorer yacht, perfect for long family expeditions as well as shorthanded sailing.



DESIGN, EXTERIOR, GENERAL VIEW

Bred as a true explorer, Bering 72 originated from classic trawlers' lines, but one can hardly recognize this kinship. The stem has a less overhang angle, while the transom is almost vertical with a large swimming platform that reveals the vessel as a luxury yacht.

Streamlined appearance is further developed with different bow and stern levels, some sharp lines in the aluminum superstructure, and large pilot deck panoramic windows. The bow section with vertical portholes adds more to the contemporary look of Bering 72.

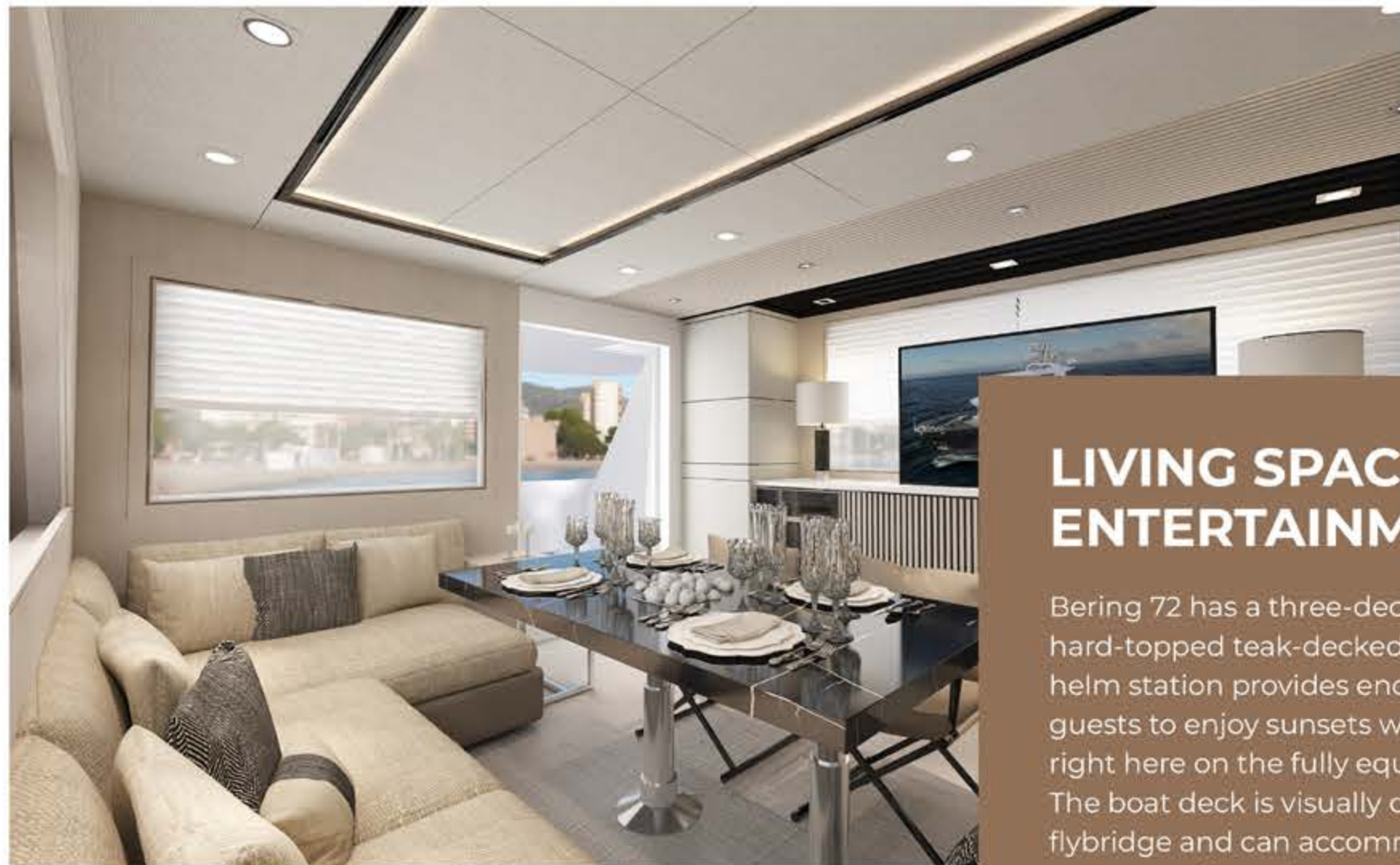


Bering 72 is capable of any ocean crossing. 260 lbs of displacement of the 21.88 meters steel hull guarantees smooth sailing in any weather conditions and sea state. 4,500 gallons (18,200 l) of fuel makes for more than 5000 miles travel range with a cruising speed of 7 knots.



BERING 72





LIVING SPACES, ENTERTAINMENT

Bering 72 has a three-deck layout. The hard-topped teak-decked flybridge with helm station provides enough room for all guests to enjoy sunsets with meals cooked right here on the fully equipped galley. The boat deck is visually divided from the flybridge and can accommodate one big or two small tenders easily launched and recovered with a hydraulic crane.

The main deck features a saloon, galley, and isolated pilothouse on different levels. The saloon has a dinette with a built-in U-shaped settee to starboard. There is a huge 48-inch pullout TV panel to entertain the guests on the port side amidst two wine cabinets.

Moving forward, the full-width galley is just aft of the pilothouse. Visually separated from the saloon with stairs, the galley nevertheless keeps the whole bunch together even if some of the guests are fond of (or busy with?) Cooking. The galley has abundant storage spaces and is well equipped with fridges, an electrical cooking top, oven, microwave, and trash compactor.





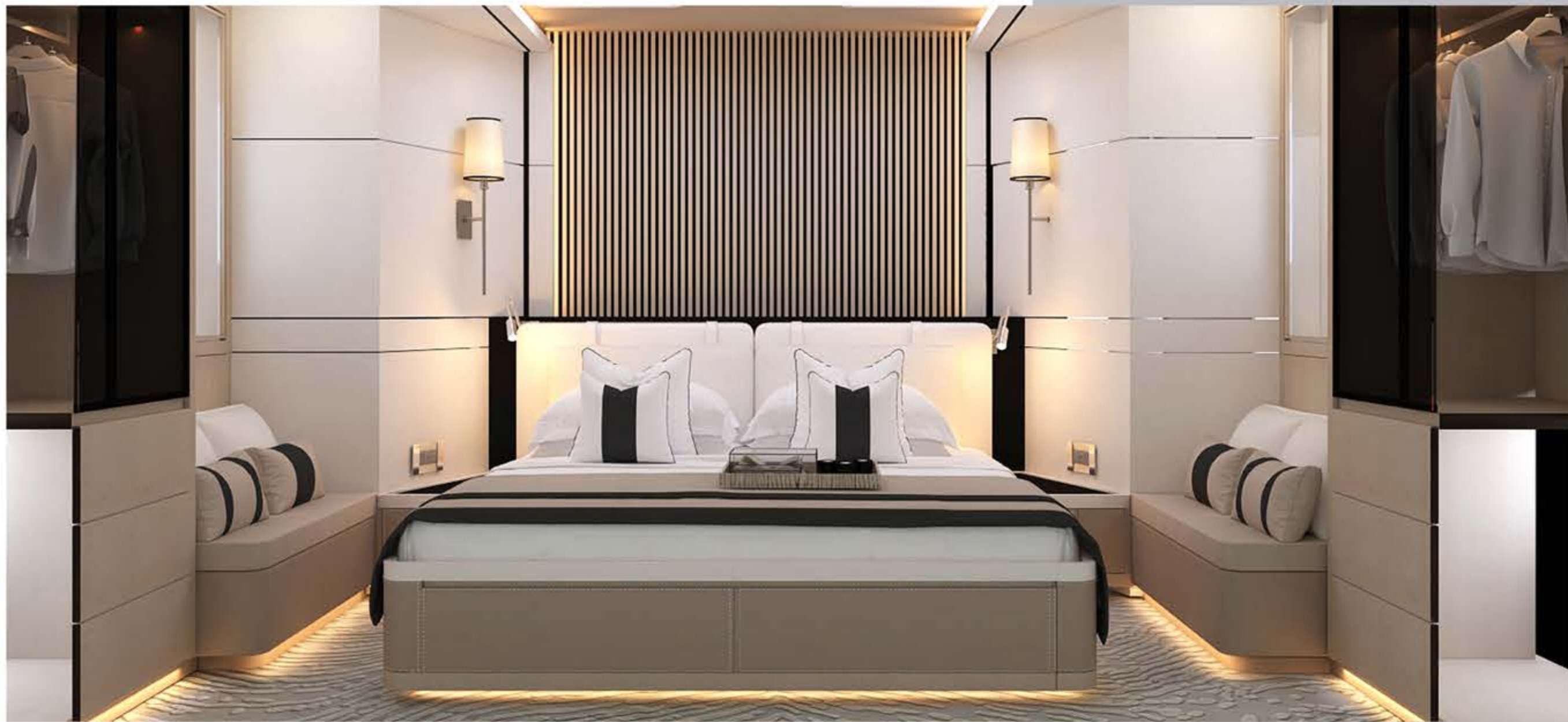
The autonomous pilothouse is well highlighted by panoramic 19 mm tempered glass windows. There is a day head to the port and an L-shaped settee with a table to the starboard.

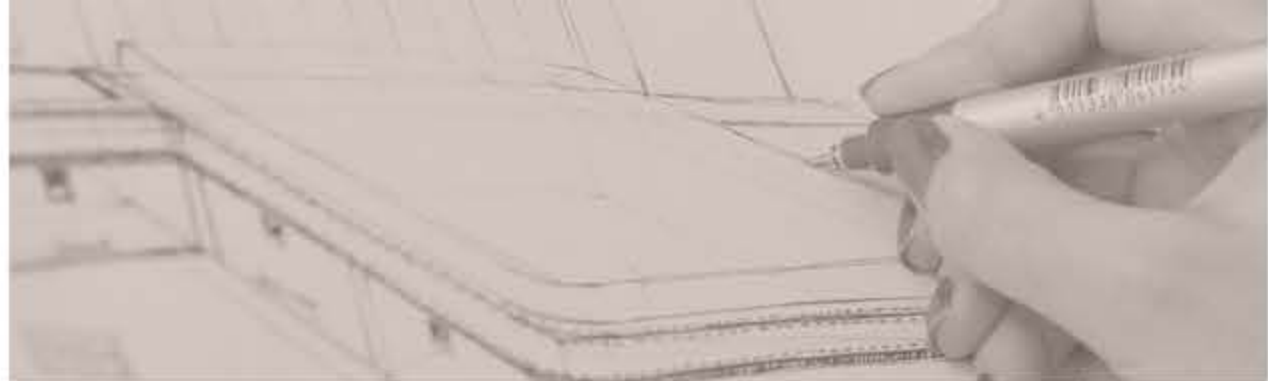
The outside areas of Bering 72 feature a sun-lounge forward of the pilothouse, an al-fresco dining area in the cockpit, and a large swimming platform.

The lower deck is fully isolated from the engine noises by steel bulkheads with soundproof layers. There is an en-suite full-beam master stateroom in the forward section with a full-size bath and two wardrobes. The en-suite guest cabins are amidst the vessel on port, and the starboard and the crew section are right beside adjacent the engine compartment.



BERLING 72





LAYOUT

Bering 72 comes in a 3 + 1 standard layout for a family of travelers with or without a crew. Optionally, the vessel can be reconfigured to a 4 + 1 or even a 5 + 1 layout. Given that Bering 72 is a steel-hulled explorer yacht, the layout can be custom tailored for any client's needs.



WHY BERING 72?

Bering 72 is a true compact explorer ideal for a bunch of friends or family traveling in comfort with no fuss. On her sheer large spaces, friends and families can enjoy spending time with close ones or on their own, which is a precious commodity nowadays.





BERING 72





MAIN CHARACTERISTICS

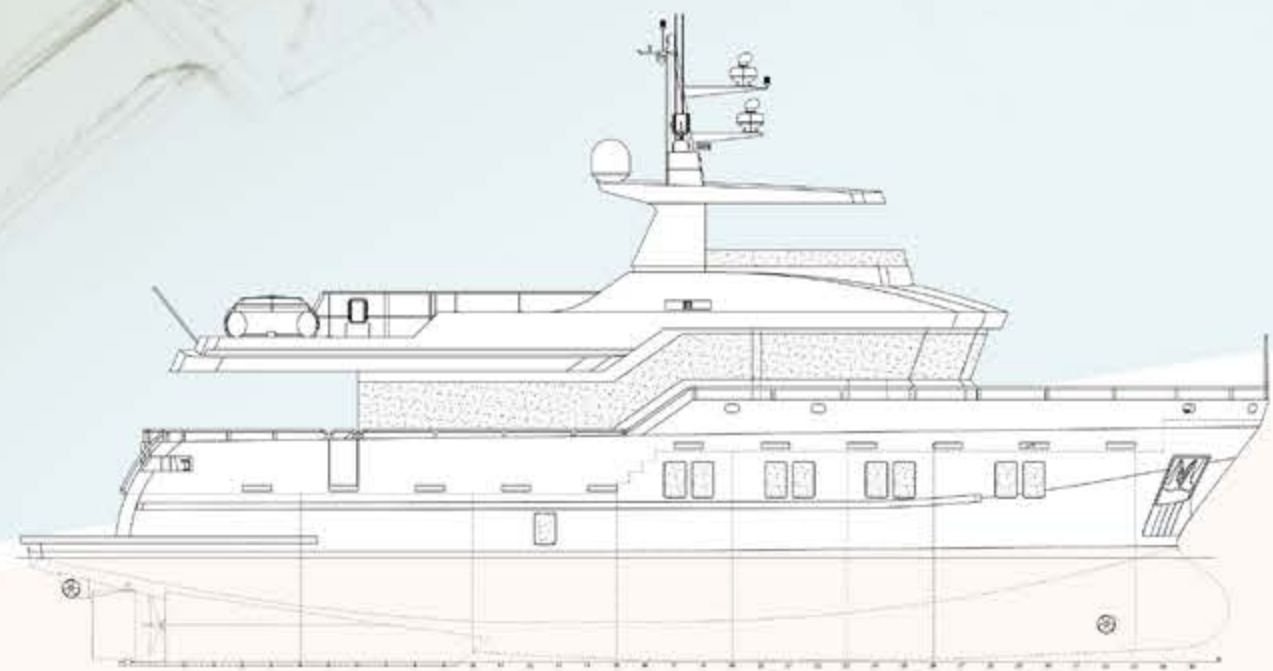
Accommodation	6 guests + 2 crew members
Length Overall (LOA)	72" (21.88 m)
Waterline Length	66" (20.07 m)
Beam	19.7" (6.00 m)
Draft (FULL LOAD)	5.9" (1.80 m)
Displacement (FULL LOAD)	260, 145 lbs (118.0 metric Tons)
Cruise Speed	8 Knots
Maximum Speed	10 Knots
Range	5,000+ nautical miles at 7 knots
Twin Engines	2*Cummins QSL 9 326 HP @ 1800 rpm

TANK CAPACITY

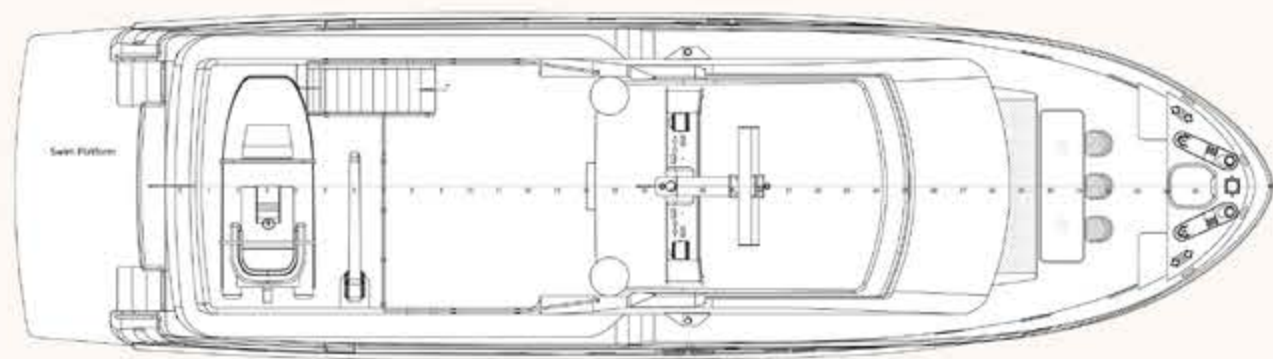
Fuel	4,500 gal. (18,200 L)
Water	660 gal. (2,500 L)
Grey Water	530 gal. (2,000 L)

BUILD / CONSTRUCTION

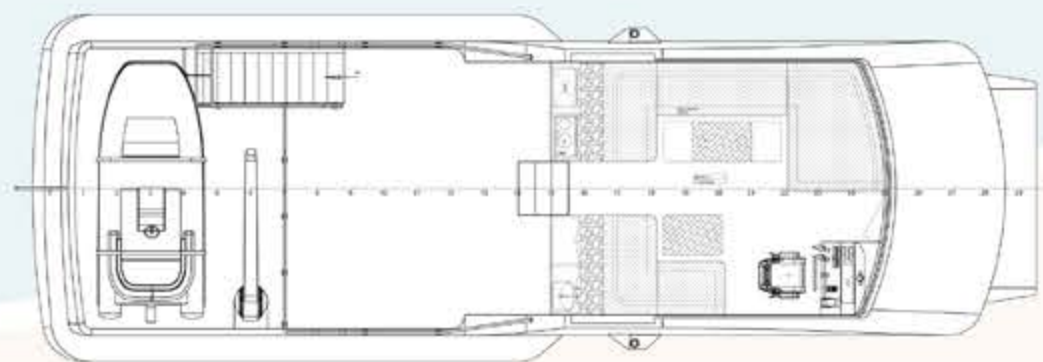
Hull	Marine Grade Steel AH-36
Superstructure	Marine Grade Aluminum 5083



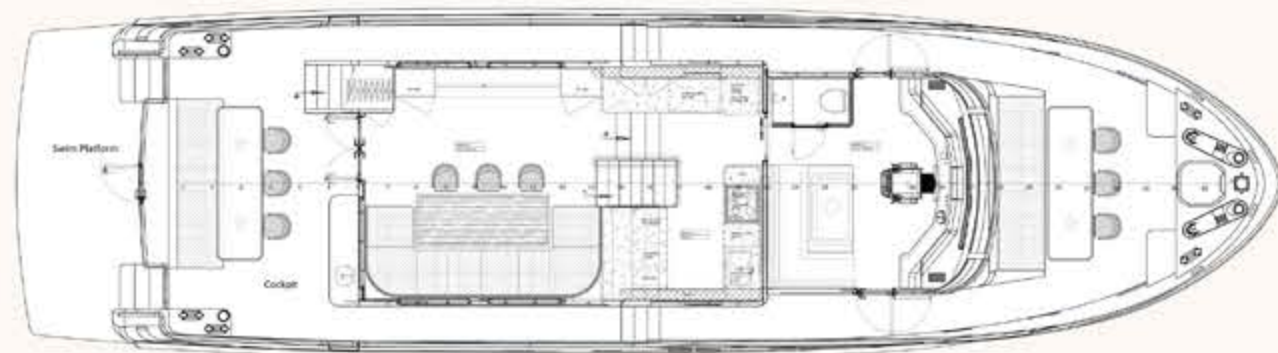
STARBOARD PROFILE



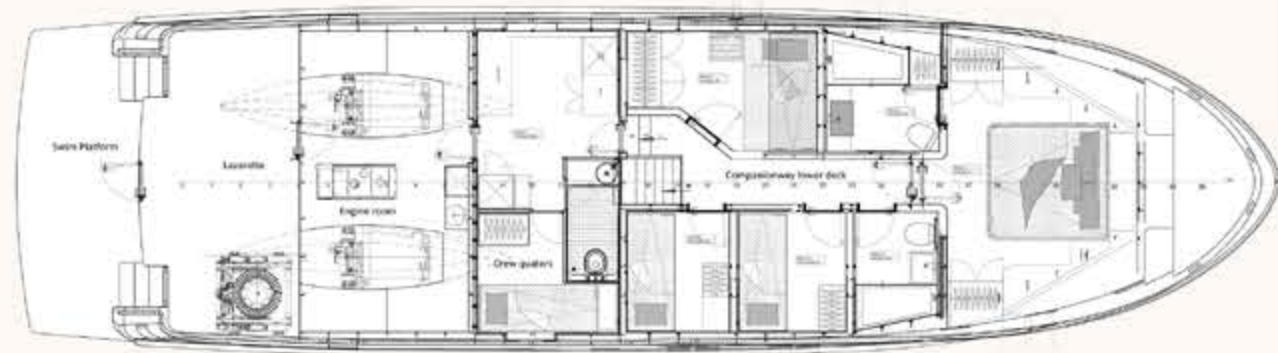
TOP VIEW



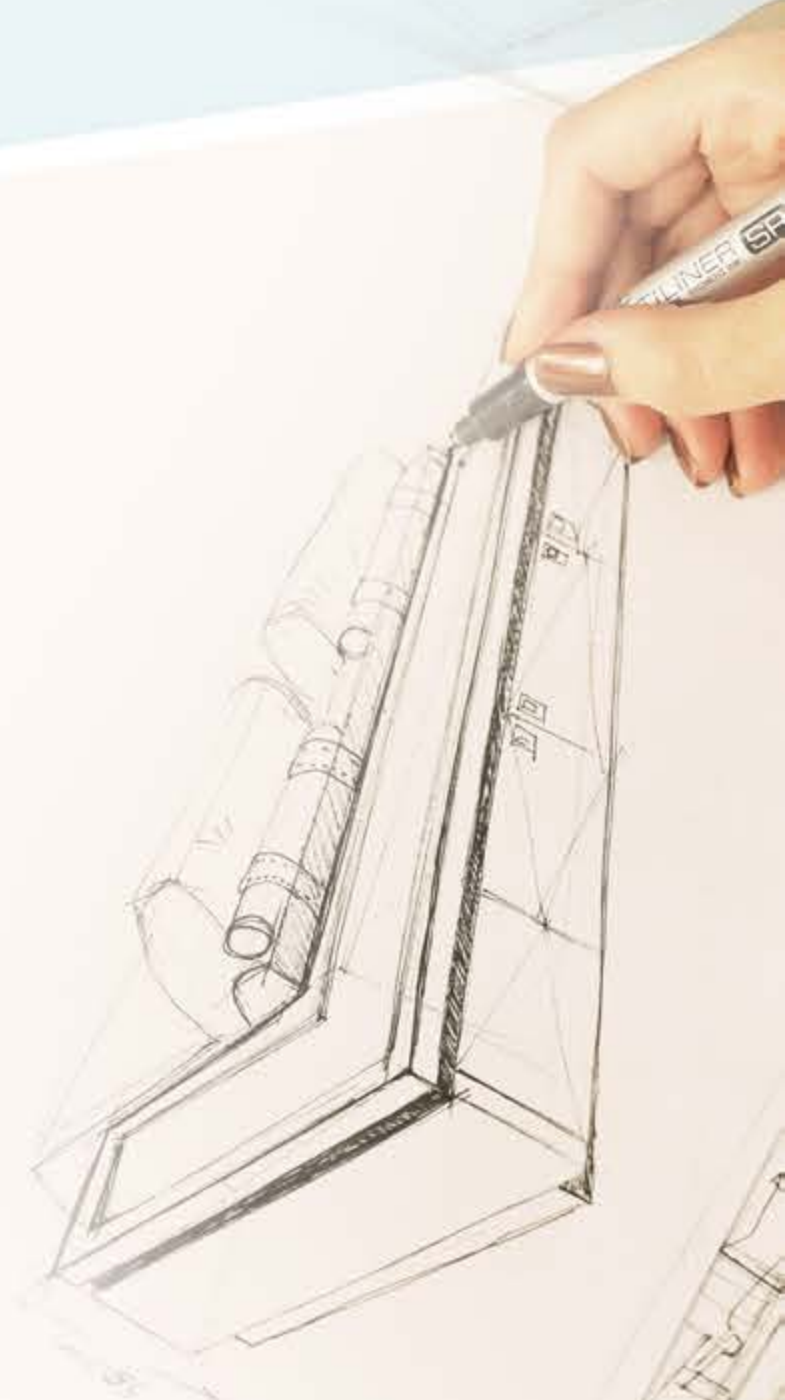
UPPER DECK



MAIN DECK / SWIM PLATFORM



LOWER DECK



BERING

YACHTS

WWW.BERINGYACHTS.COM

